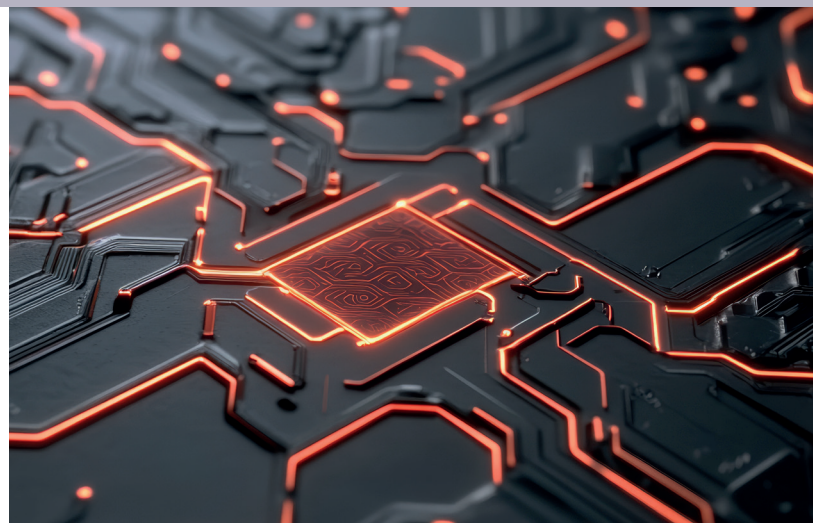




SHAPING THE FUTURE OF RF TECHNOLOGY

GROW THE RF ECOSYSTEM TOGETHER

BECOME AN ASSOCIATE PARTNER OF POLARIS AND MAKE IMPACT IN THE REAL WORLD



This project is supported by the
National Growth Fund

WHAT IS POLARIS?

POLARIS is a Dutch National Growth Fund program focused on the future of RF technology. It brings together leading companies, universities, and research institutes to develop next-generation high-value RF systems.

From radar to MRI and beyond, POLARIS connects research, innovation, and valorization, thus strengthening Europe's position in advanced RF technologies.



POLARIS CONNECTS THE FULL RF VALUE CHAIN:

Materials

Chips

Packaging

System

THIS ENABLES BREAKTHROUGHS IN:

- ▶ Next-generation MRI
- ▶ Advanced radar systems
- ▶ Wireless connectivity

KEY FACTS

- ▶ €101.7M National Growth Fund Investment
- ▶ €66.3M partner contribution
- ▶ 8-year program (2025–2032)
- ▶ 40+ PhD researchers
- ▶ 10+ demonstrators

INNOVATION HAPPENS TOGETHER

Future RF systems require integration across multiple scales from nanometer chips to full systems. No single organization can cover this entire chain.

That is why POLARIS builds an open ecosystem, where partners collaborate across disciplines and domains.

WHY IT WORKS

- ▶ Stronger impact through collaboration
- ▶ Cross-disciplinary innovation
- ▶ From research to system integration
- ▶ Shared challenges lead to shared solutions

WHERE CAN YOU CONTRIBUTE?

- ▶ RF packaging
- ▶ Antenna systems
- ▶ High-frequency electronics
- ▶ System engineering
- ▶ Simulation methods

POLARIS IN PRACTICE POLARIS IN PRACTICE POLARIS IN PRACTICE POLARIS IN PRACTICE

BUILDING THE FUTURE OF RF — TECHNOLOGY, ECOSYSTEM AND TALENT

POLARIS focuses on applied research in advanced RF systems, combining scientific excellence with real-world application. Through long-term commitment, the program aims to create sustainable value and lasting impact in the Netherlands.

At the same time, POLARIS builds a strong and flourishing RF ecosystem, not only by connecting partners, but also by developing the next generation of talent and skills needed to drive future innovation.

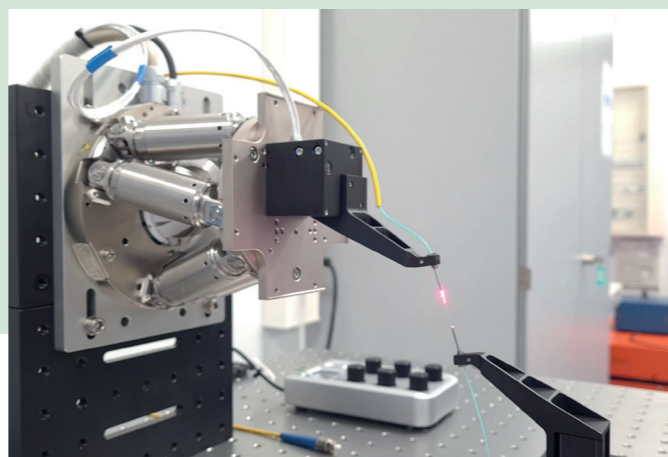
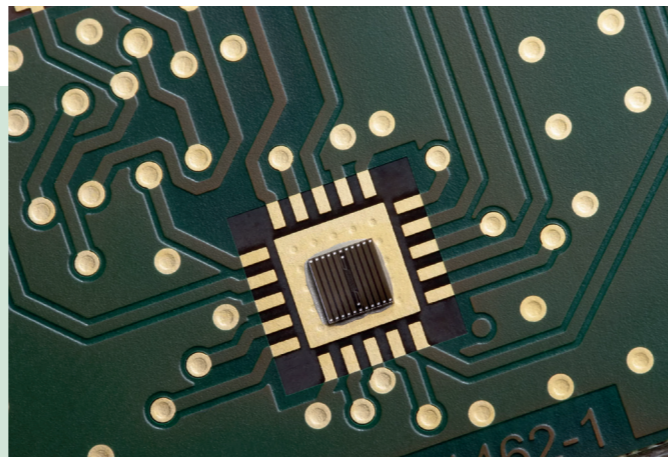
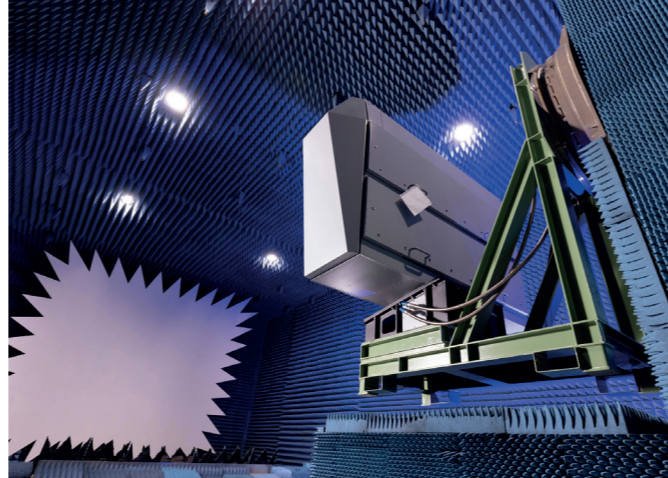


WHAT'S IN IT FOR YOU

As an Associate Partner, you become part of a strong and active RF community. You gain access to knowledge, people, and opportunities that are difficult to reach on your own.

YOU GAIN

- ▶ Co-funded innovation opportunities
Engage in white spots with 50% co-funding.
- ▶ Access to a leading RF ecosystem
Connect with top companies, universities, and research institutes.
- ▶ Early insight into research developments
Stay informed on results, publications, and emerging technologies.
- ▶ Collaboration opportunities across domains
Join concrete innovation activities.
- ▶ Human Capital development and training
Access newly developed courses and training tailored to the community.
- ▶ Visibility within a strategic program
Position your organization in the RF ecosystem.
- ▶ Access to events and community
Join workshops, events, and the annual Town Hall.
- ▶ Early positioning in future initiatives
Be ready for upcoming calls and opportunities.



A SHARED MINDSET

POLARIS is built on openness and collaboration.

WE ASK

- ▶ Relevant RF expertise or application knowledge
- ▶ An open and collaborative attitude
- ▶ Willingness to share insights and ideas
- ▶ Engagement in ecosystem activities
- ▶ Interest in long-term innovation

WHO CAN JOIN?

- ▶ Companies (SMEs & large enterprises)
- ▶ Knowledge institutes
- ▶ Educational organizations
- ▶ Cluster organizations

REQUIREMENTS

- ▶ Presence in the Netherlands with relevant R&D
- ▶ Demonstrable expertise or application relevance
- ▶ Added value to the ecosystem
- ▶ Alignment with innovation and collaboration goals, with a clear affinity for the POLARIS ecosystem

ACHIEVE MORE TOGETHER ACCES OPPORTUNITIES BEYOND YOUR REACH

YOUR ENTRY INTO POLARIS

Becoming an Associate Partner is a simple and accessible way to connect to the POLARIS ecosystem. It allows organizations to:

- ▶ Explore collaboration opportunities
- ▶ Connect to partners
- ▶ Understand the research landscape
- ▶ Engage step-by-step

WHAT ARE WHITE SPOTS?

Within POLARIS, white spots are identified gaps and opportunities in the RF research landscape. They are not abstract ideas, but concrete topics defined by both researchers and industry partners, based on ongoing work, technological developments, and emerging needs in real-world applications.

White spots highlight where additional expertise, new perspectives, or complementary capabilities are needed to move the field forward. They form a key mechanism within POLARIS to connect new partners to relevant challenges, enabling them to contribute directly to innovation and collaboration across the ecosystem.

CO-FUNDED INNOVATION

POLARIS enables partners to address these white spots through collaborative activities. For industrial organizations:

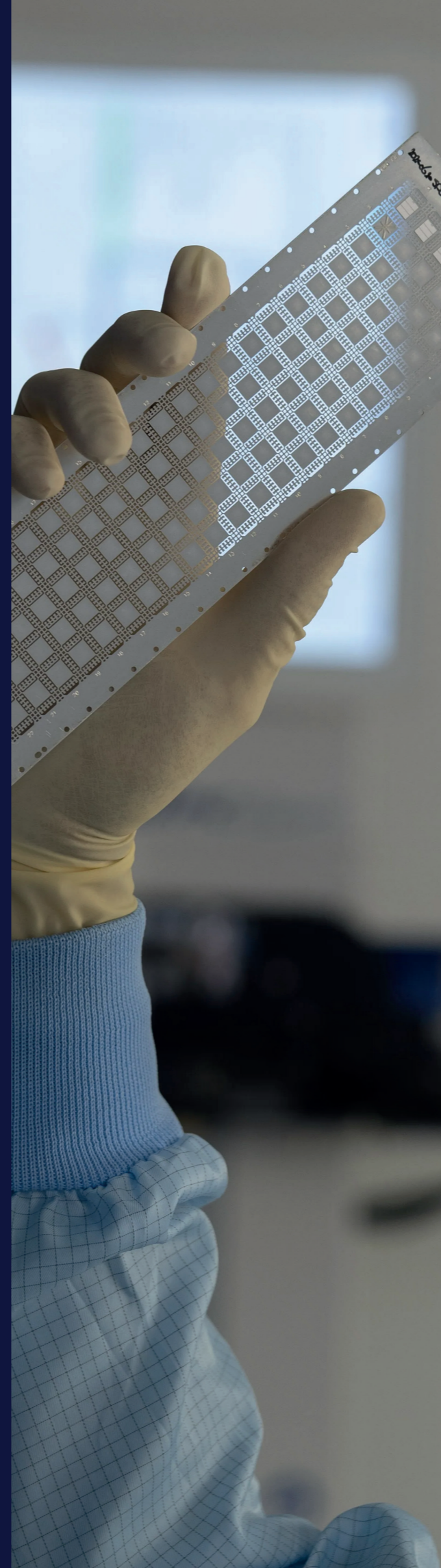
- ▶ 50% co-funding available for industry partners
- ▶ Stronger positioning in the value chain

ASSOCIATE PARTNERSHIP

What it is?

- ▶ A low-threshold entry point
- ▶ A starting step toward deeper collaboration
- ▶ A way to explore before committing

Participation as Associate Partner is currently free of charge.



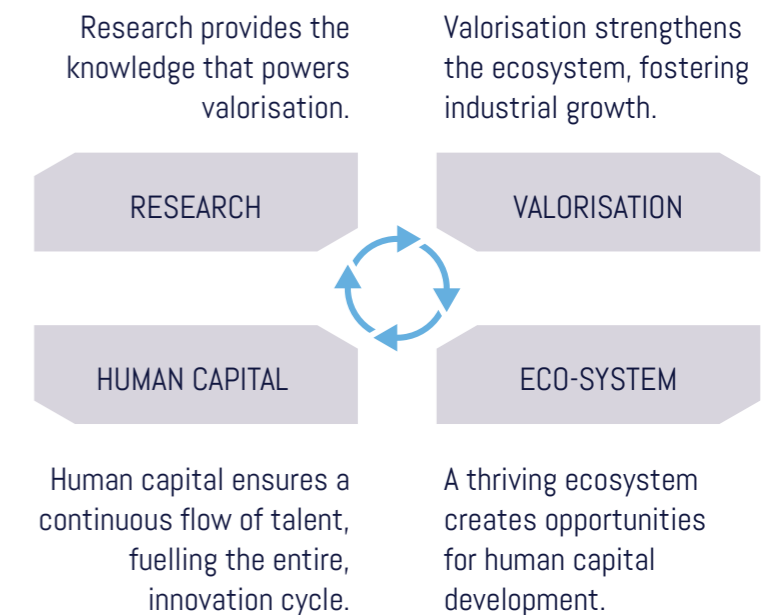
YOUR JOURNEY INTO POLARIS

1. Connect with POLARIS
2. Become an Associate Partner
3. Share your expertise
4. Explore opportunities
5. Start collaboration

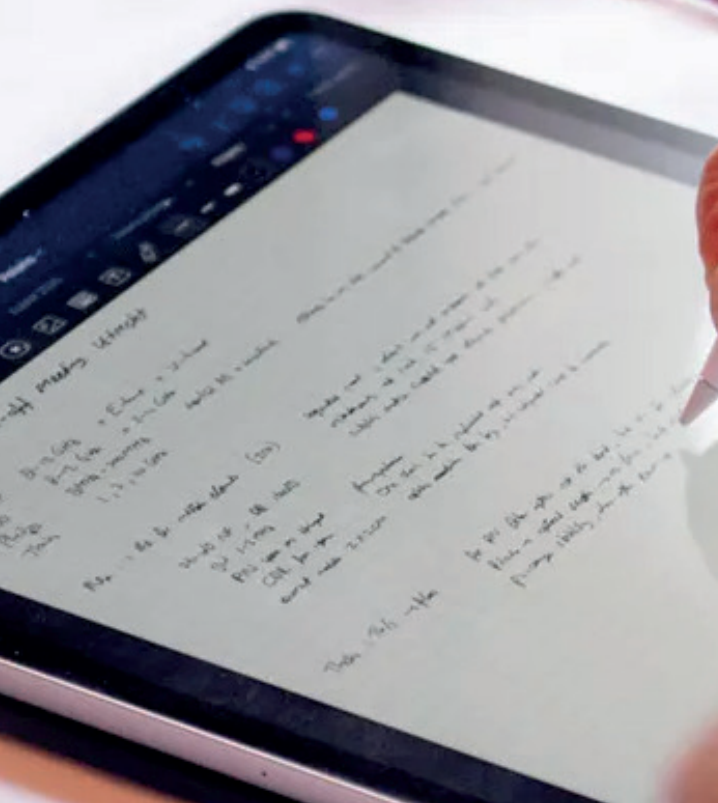
EXAMPLE - INNOVATION

A company joins as Associate Partner and connects to a white spot. Together with a university and industry partner, they develop and validate a new or improved RF solution.

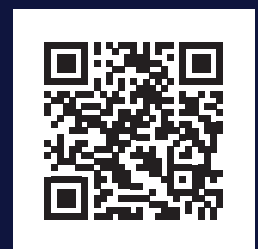
POLARIS IN ACTION



START SMALL & GROW INTO COLLABORATION



BE PART OF WHAT'S NEXT IN RF



Interested in joining the POLARIS ecosystem? Now is the moment to position your organization within a growing RF innovation network.

We would be happy to explore the added value for your organization.
Scan the QR code or visit [POLARIS-ngf.nl](https://polaris-ngf.nl)

Contact: associatepartners@polaris-ngf.nl